

# COVID-19 and Neighborhood Vulnerability

Paul Ong  
July 1, 2020

## **UCLA** Center for Neighborhood Knowledge

- Housed in the **Luskin School** of Public Affairs
- Conducts research on the socioeconomic formation and internal dynamics of neighborhoods, and how they are positioned and embedded within regions.
- Focuses on understanding the causes, patterns and consequences of **racial and economic inequalities**, with the goal of identifying effective interventions.

# The COVID-19 Crisis: Health and Beyond

- The pandemic has fundamentally **transformed** lives, today and tomorrow.
- **Upended** our livelihood, homes and belonging – if and how we work, our ability to shelter securely and safely, and our relationship to government.
- Outcomes have been very **uneven**, with COVID-19 disparities built on and magnifying past racial and class injustices, which will persist into the recovery.

# CNK's COVID-19 Research Initiative

- **Purpose:** Conduct theoretically grounded empirical research to understand how the COVID-19 crisis reproduces and deepens racial and economic inequalities; and use results to formulate evidence-based policies, programs and allocations to redress systematic and systemic disparities.
- **Method:** Adapting from Ong, Paul M., and Silvia R. Gonzalez. *Uneven Urbanscape: Spatial Structures and Ethnoracial Inequality*. Cambridge University Press, 2019.
- **Resources to date:** Pro bono voluntary labor for primary analyses and briefs; in-kind contributions from partners for production and dissemination.



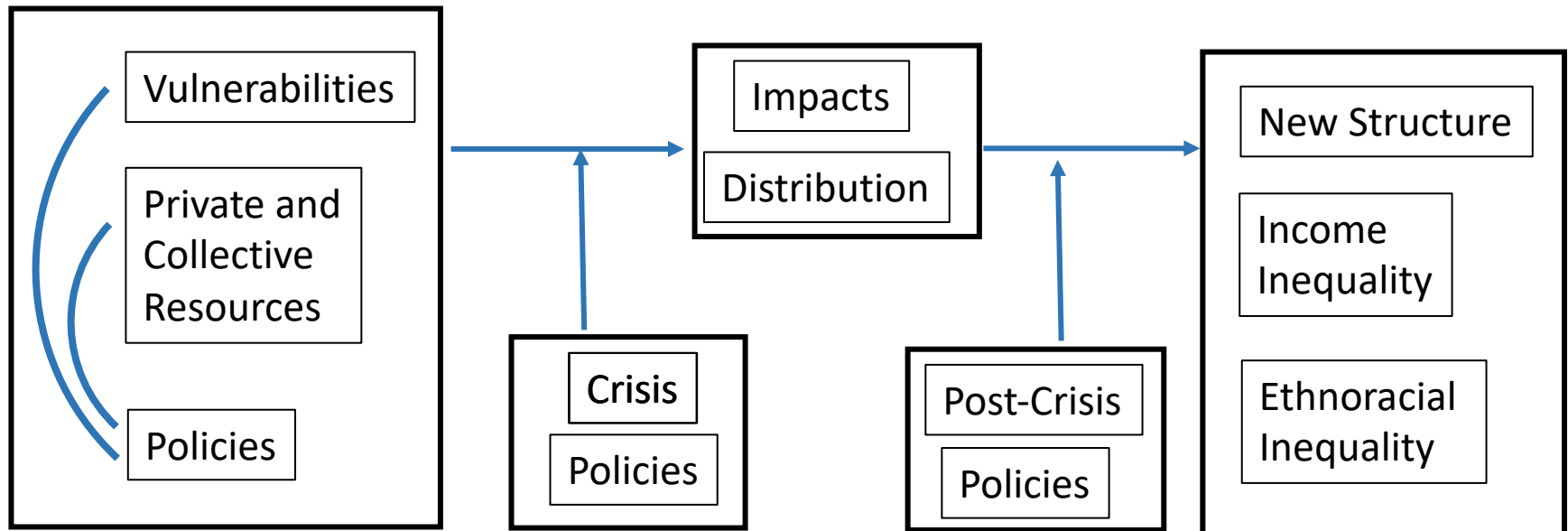
# Current Partners

- **UCLA:** Latino Policy and Politics Initiative; Institute on Inequality and Democracy; Asian American Studies Center; American Indian Studies Center; Ziman Center for Real Estate; Luskin School Communication
- **Other universities:** Orange County and UC Irvine Department of Urban Planning; Inland Empire and UC Riverside Center for Economic Forecasting; and Bay Area and SFSU Economics.
- **Others:** California Air Resource Board; U.S. Bureau of Census; StreetLight (crowd-sourced vehicle traffic); and SafeGraph (crowd-sourced pedestrian traffic); California Breast Cancer Research Program, University of California Office of the President

# Why Neighborhoods?

- Neighborhoods are powerful **determinants of outcome** (e.g. “your zip code predicts more about health than DNA”) “We make neighborhoods, and neighborhoods make us.”
- People **lives** anchored to neighborhoods, a sense of belonging and identity, of intense social interactions.
- Hard to define, but “**know it when I see it**” (Justice Potter Stewart) Many neighborhoods are “communities” and embedded in multiple geographic layers; have overlapping boundaries, have fuzzy and contested borders; and vary in size.
- Has theoretical, methodological and policy **relevance**.

# Conceptual Framework of Reproduction of Inequality



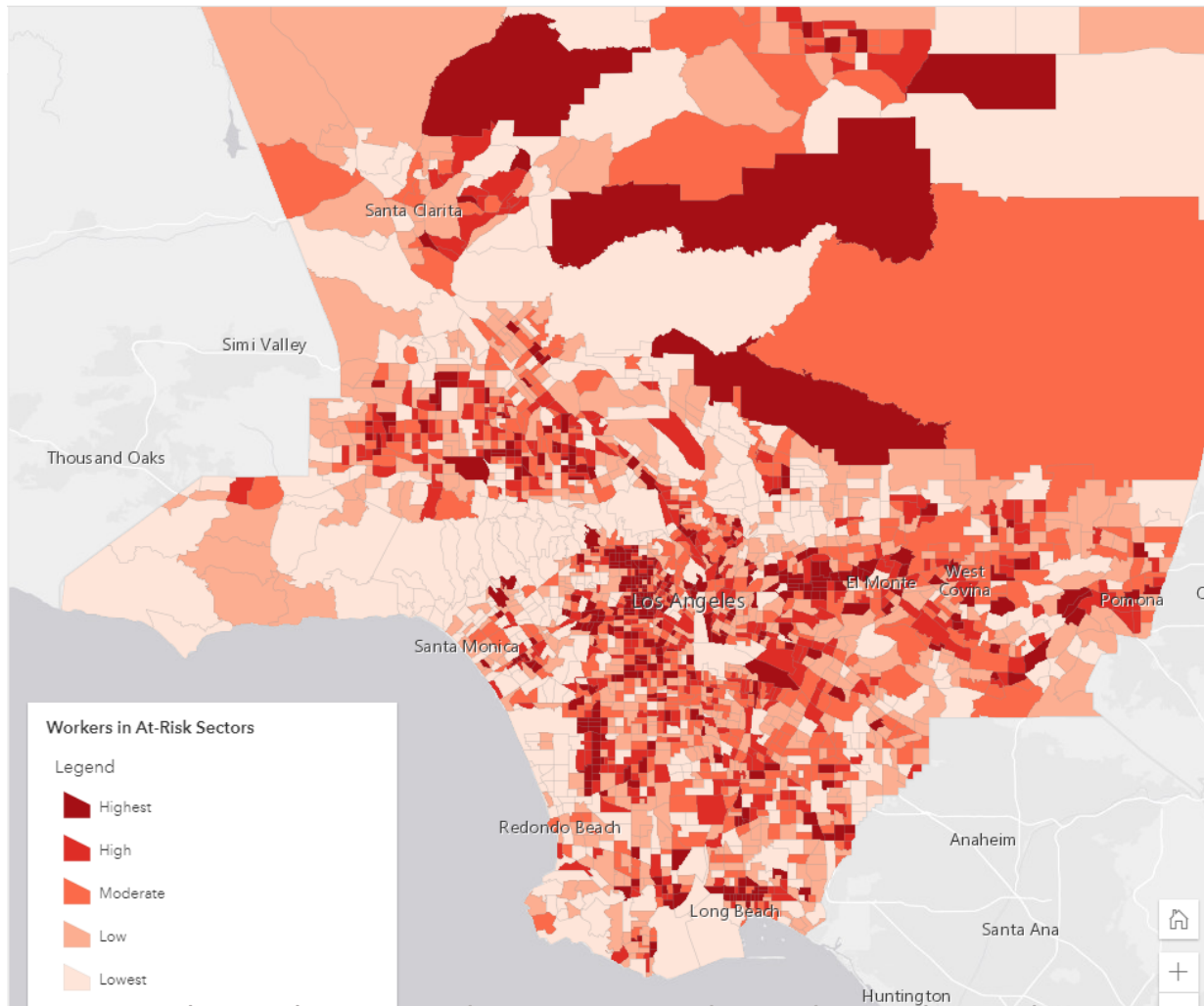
# Breaking the Interlocking Web of Inequalities



# Indicators of Neighborhood Vulnerability

- Three measures of vulnerability (census tract)
  - Loss of Livelihood
    - Threat of joblessness
    - Threat of no financial relief
  - Housing Burden and Displacement
    - Unequal burden of sheltering in place
    - Threat of loss of home
  - Political Invisibility
    - Not counted in 2020 Census
    - Under represented and under resources
- Identify most vulnerable places
- Develop profile of residents

# Threat to livelihood: Workers in At-Risk Sectors

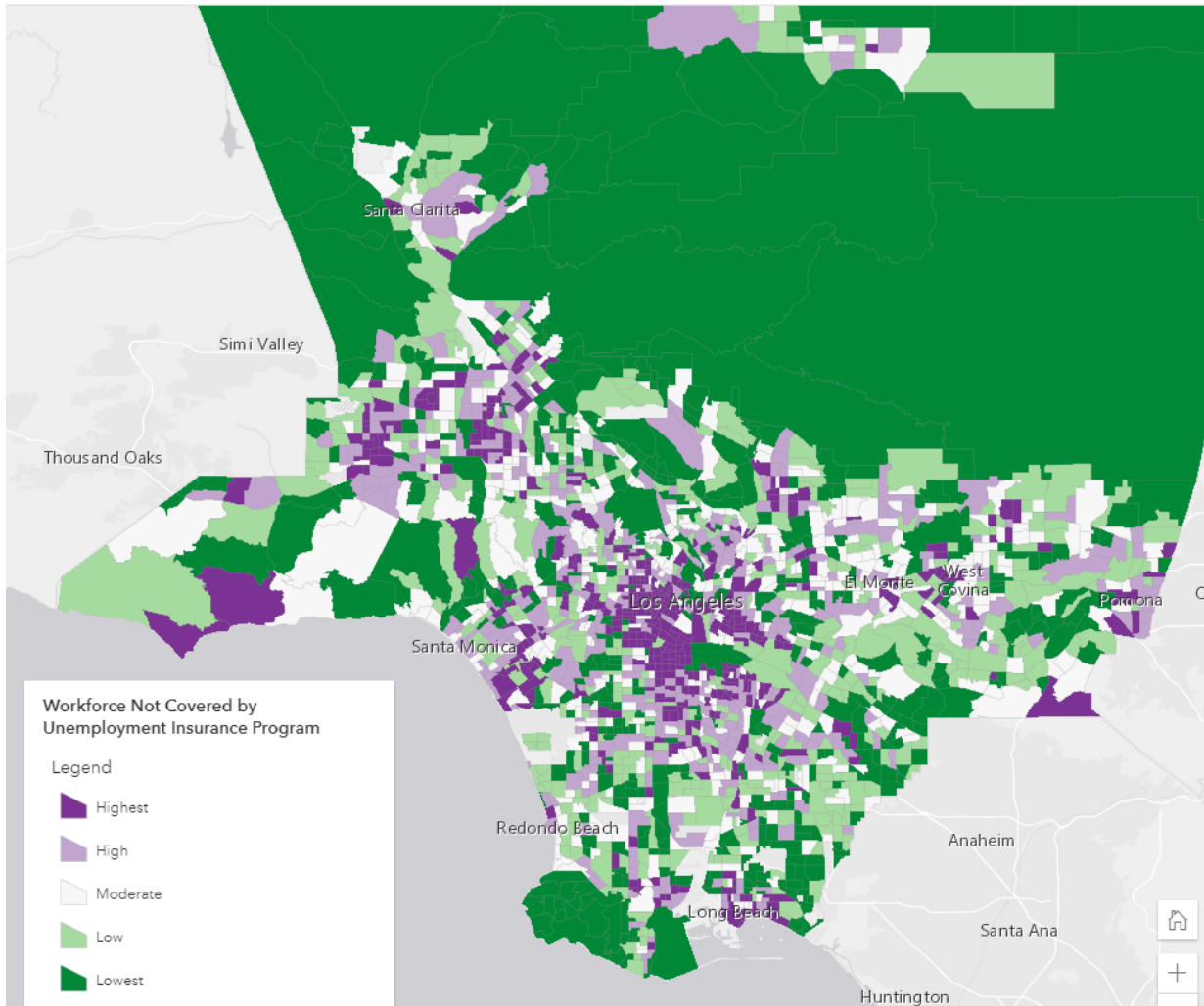


Some of the **most** vulnerable workers are concentrated in:

- South and Central LA
- Koreatown
- San Gabriel Valley
- San Fernando Valley
- Central Long Beach

Sales workers in retailing, service workers in hospitality, and workers in personal care and service occupations

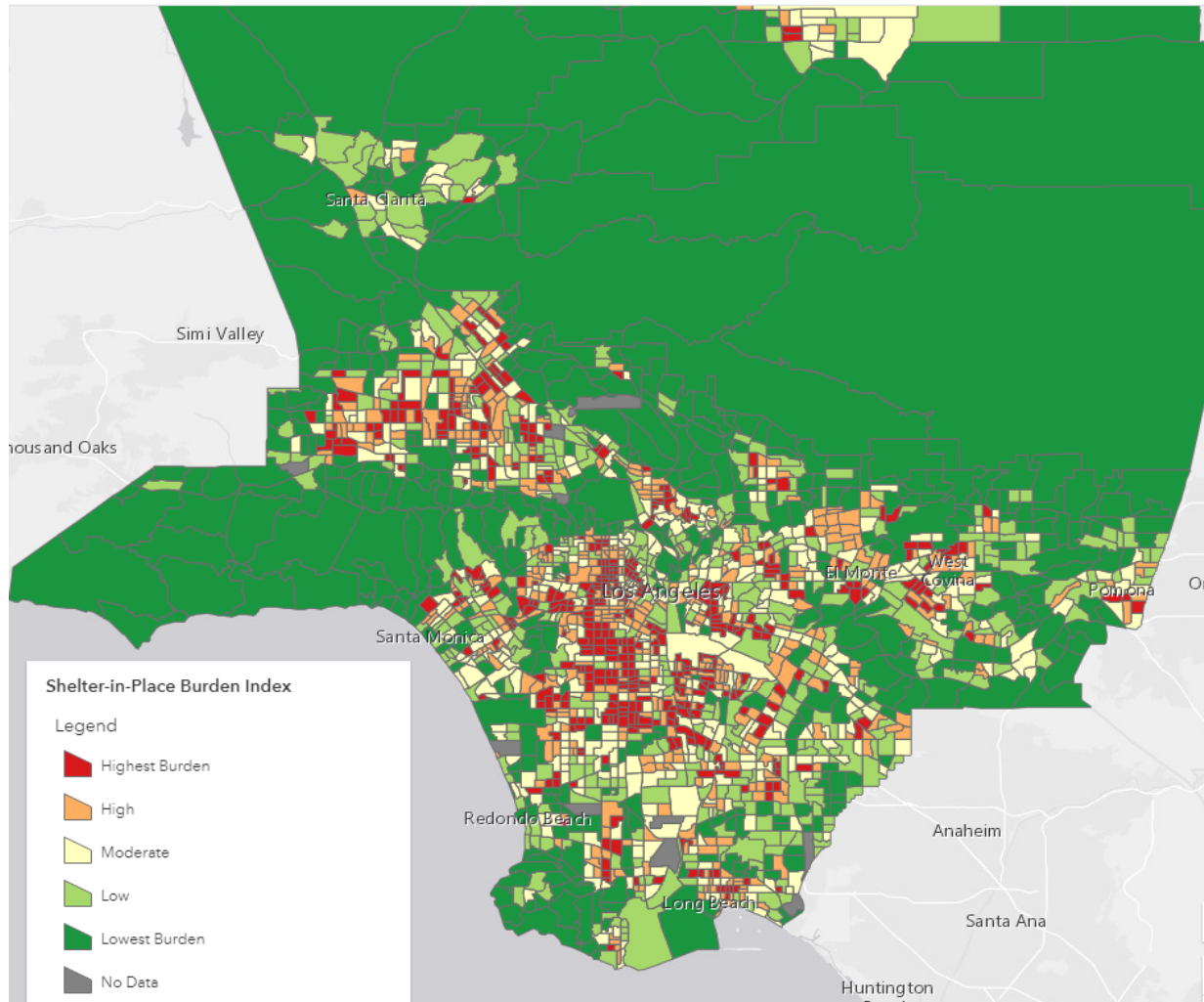
# Threat of Exclusion from Relief: Workers not Covered by UI



Some of the **most** vulnerable neighborhoods include:

- Central LA
- Eastern half of South LA
- Pico-Union
- Thai Town
- Boyle Heights
- Van Nuys
- Central Long Beach

# Threat at home: Shelter-In-Place Burden Index



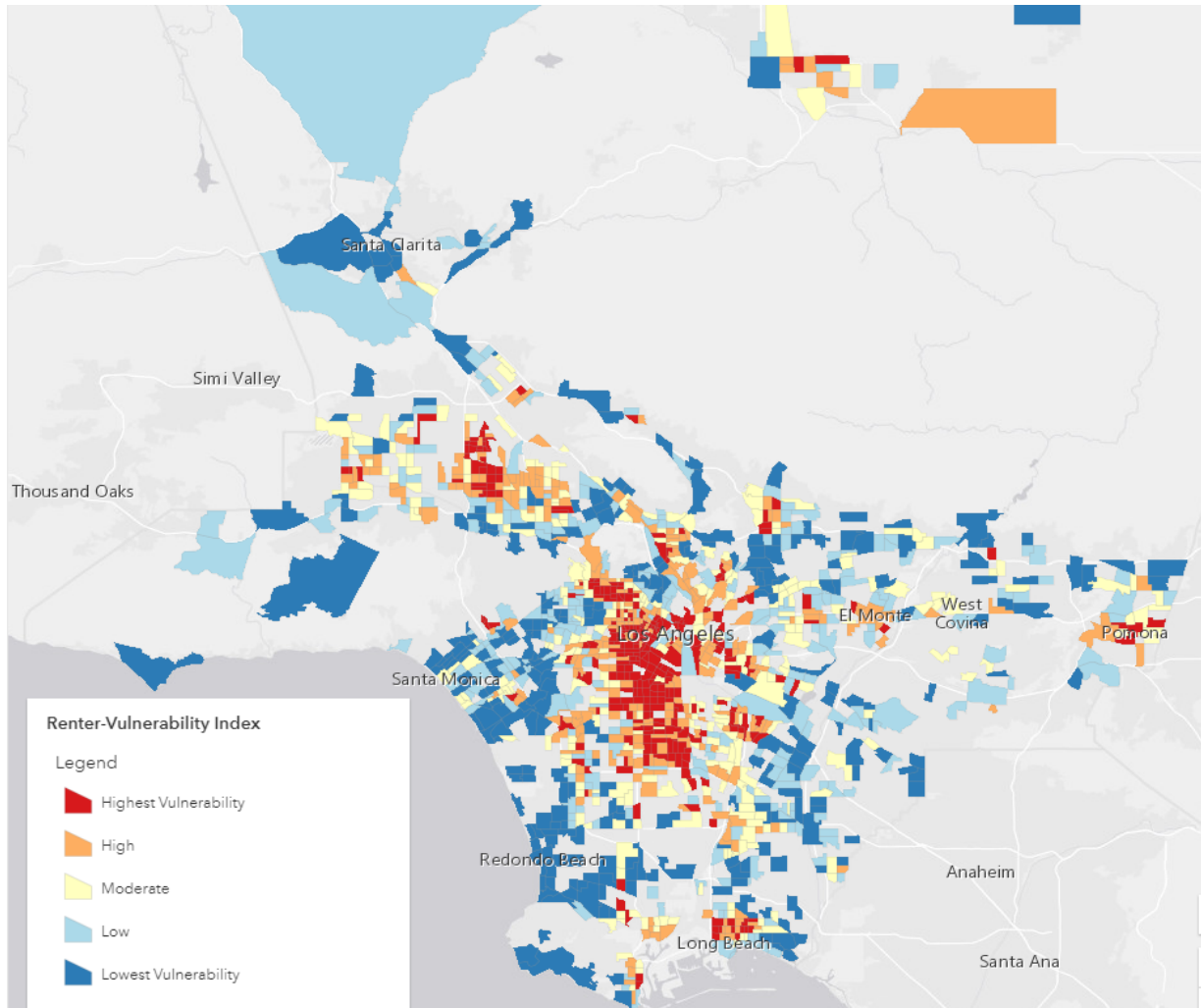
Neighborhoods with the **highest** burden are concentrated in South Los Angeles.

**Least** burdened neighborhoods are dispersed throughout the county's more affluent coastal and mountain neighborhoods.

High density, lack of open space, lack of food (supermarket) access



# Threat to Having a Home: Renter-Vulnerable Neighborhoods

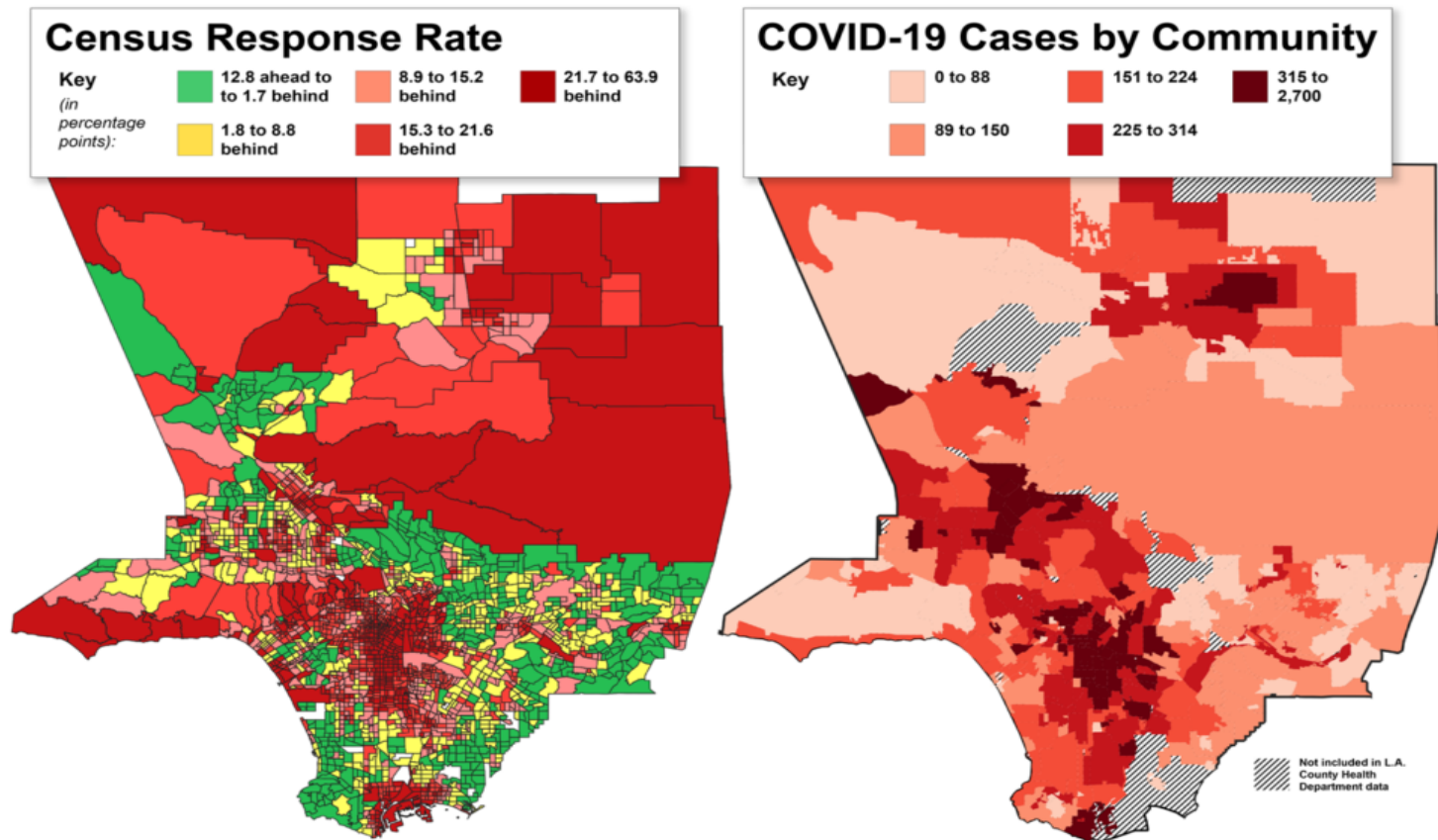


Some of the **most** vulnerable neighborhoods are concentrated in:

- South LA
- MacArthur Park
- Pico-Union
- Koreatown
- Hollywood
- Boyle Heights
- Van Nuys
- Central Long Beach

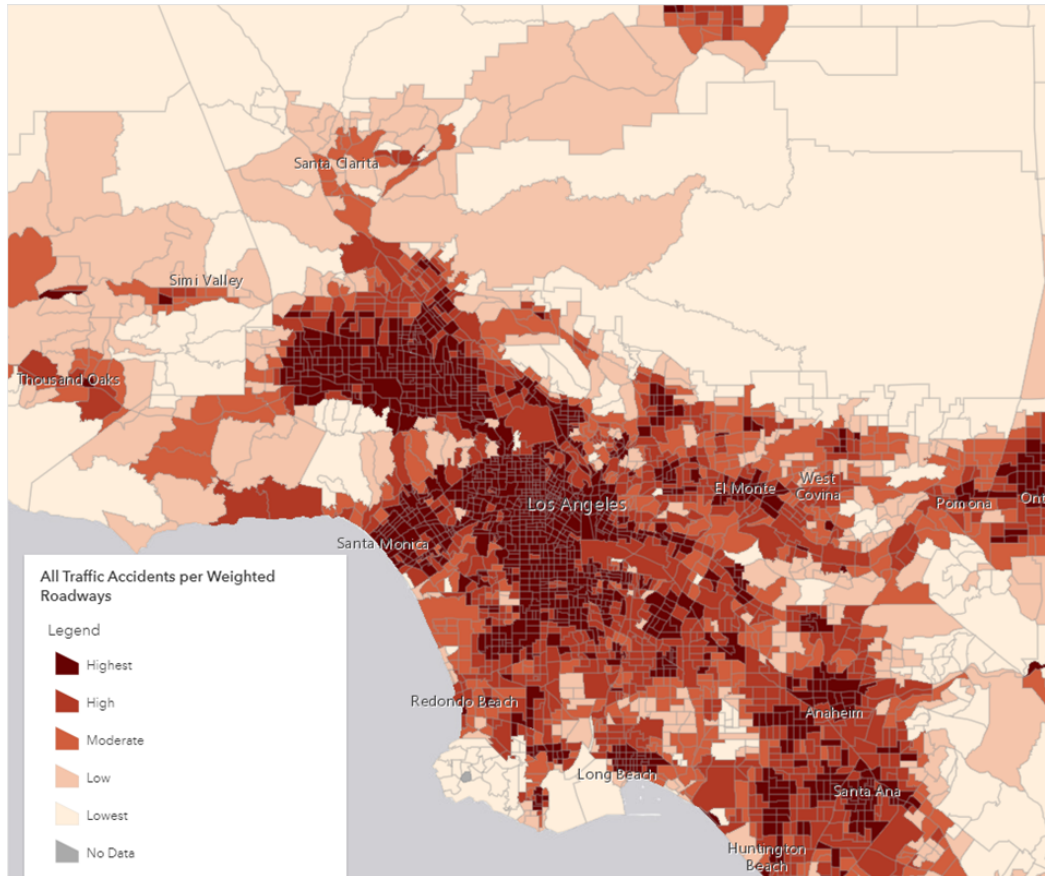
Financial precariousness, joblessness exposure, exclusion from new COVID-19 economic safety net

# Threat of Becoming Invisible: Differential Census Undercount



# Redressing Health Related Disparities

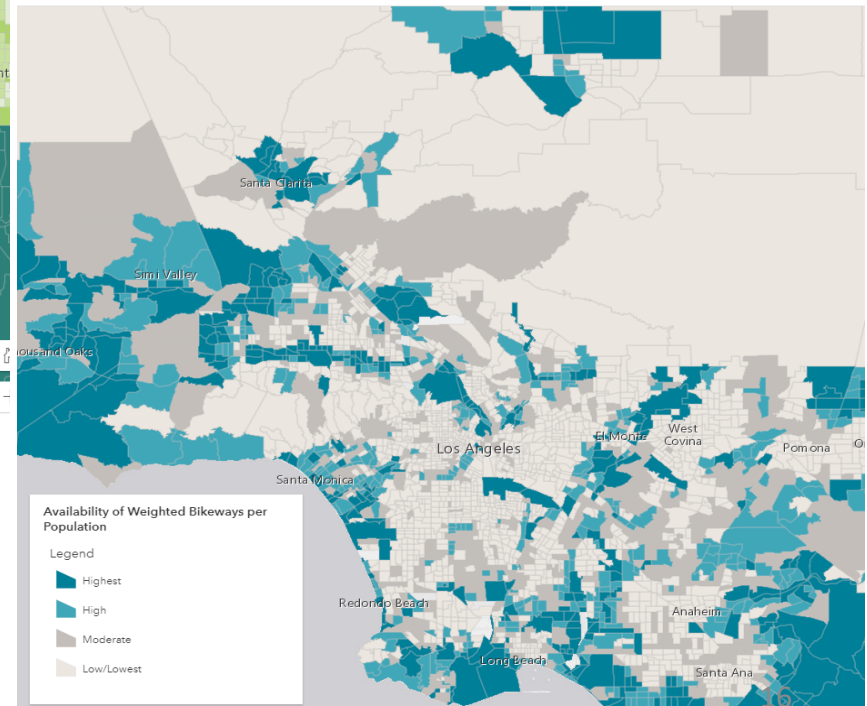
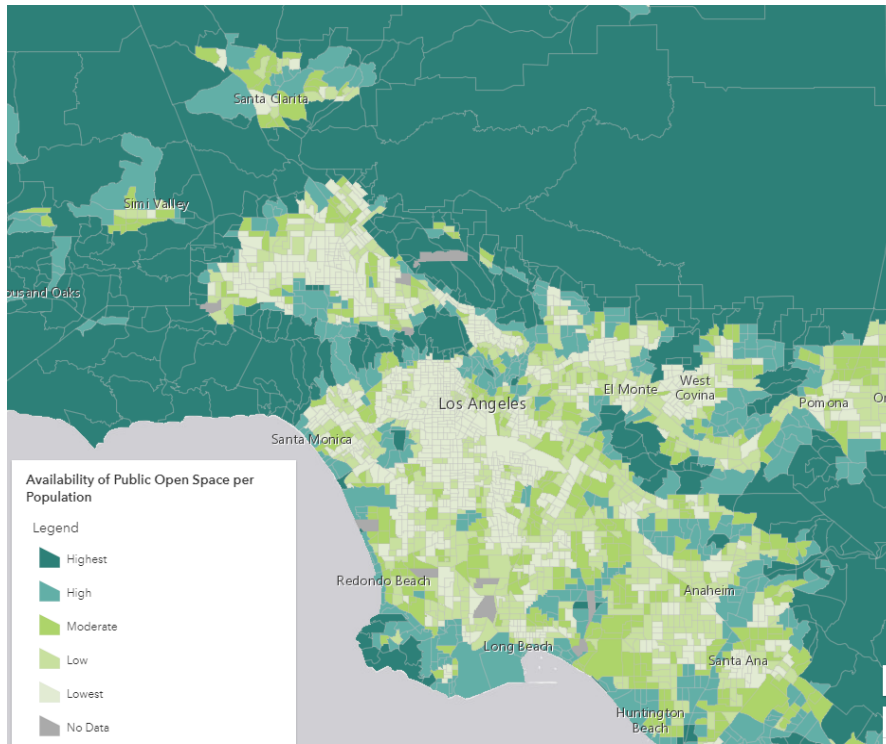
**Vehicle accidents** most prevalent in highly urbanized neighborhoods, particularly in low-income and minority communities.



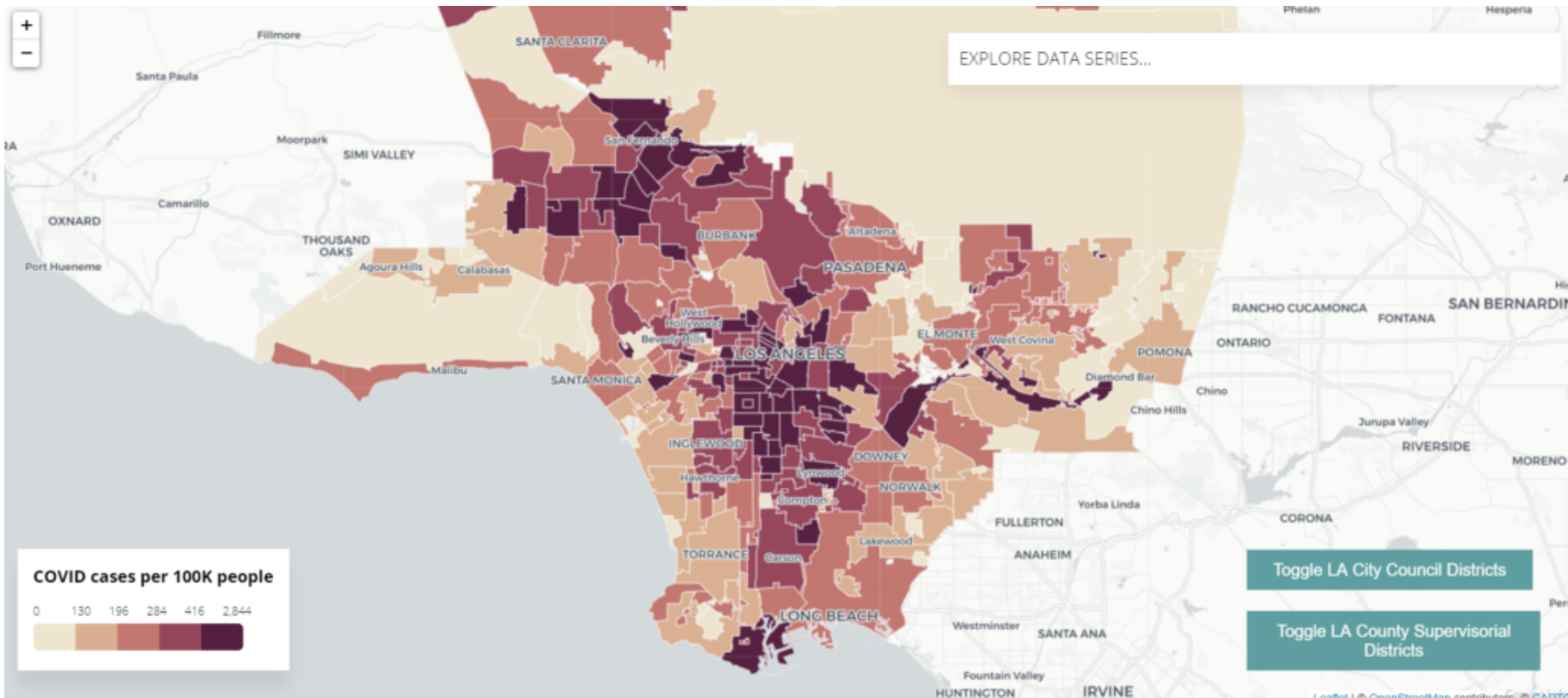
California Air Resources Board

California Initiative for Health Equity & Action

# Active Transportation Availability of Parks and Access to Bikeways



# Democratizing Data: Interactive Mapping and Briefs



[knowledge.luskin.ucla.edu/maps/](https://knowledge.luskin.ucla.edu/maps/)



# Economic Impact of the COVID-19 Pandemic in Riverside County

Unemployment Insurance Coverage and Regional Inequality

June 2020

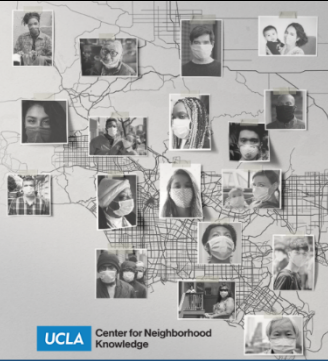
UCLA Center for Neighborhood Knowledge

UC RIVERSIDE School of Business CENTER FOR ECONOMIC FORECASTING & DEVELOPMENT

## STRUGGLING TO STAY HOME:

### How COVID-19 Shelter in Place Policies Affect Los Angeles County's Black and Latino Neighborhoods

Paul Ong, PhD, Silvia Gonzalez, PhD Candidate, Chhandara Pech, MURP, Sorja Diaz, JD, MPP, Jonathan Ong, BA, Elena Ong, PHN, MS, and Julie Aguilar, MPP Candidate  
MAY 19, 2020



UCLA Latino Policy & Politics Initiative

ONG & ASSOCIATES

UCLA Center for Neighborhood Knowledge

UCLA Latino Policy & Politics Initiative

# EFFECTS OF COVID-19 ON CALIFORNIA'S VULNERABLE COMMUNITIES



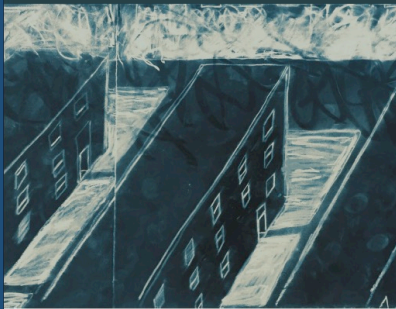
## UCLA ECONOMIC LETTER

### REAL ESTATE AND THE MACROECONOMY

### Neighborhood Inequality in Shelter-in-Place Burden: Impacts of COVID-19 in Los Angeles

Paul Ong, Jonathan Ong, Elena Ong, and Andrés Carrasquillo

April 22, 2020



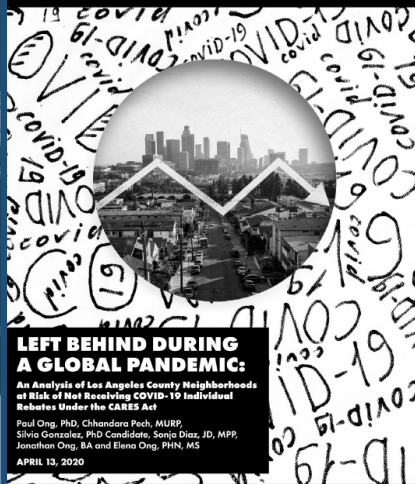
ONG & ASSOCIATES

WRITTEN BY INEQUALITY AND DEMOCRACY

UCLA Center for Neighborhood Knowledge

ONG & ASSOCIATES

UCLA Latino Policy & Politics Initiative



## LEFT BEHIND DURING A GLOBAL PANDEMIC:

### An Analysis of Los Angeles County Neighborhoods at Risk of Not Receiving COVID-19 Individual Rebates Under the CARES Act

Paul Ong, PhD, Chhandara Pech, MURP, Silvia Gonzalez, PhD Candidate, Sorja Diaz, JD, MPP, Jonathan Ong, BA and Elena Ong, PHN, MS  
APRIL 13, 2020

UCLA Latino Policy & Politics Initiative

UCLA Center for Neighborhood Knowledge

## IMPLICATIONS OF COVID-19 ON AT-RISK WORKERS BY NEIGHBORHOOD IN LOS ANGELES

Paul Ong, PhD, Chhandara Pech, MURP, Silvia Gonzalez, PhD Candidate, and Carla Vasquez-Noriega  
APRIL 1, 2020



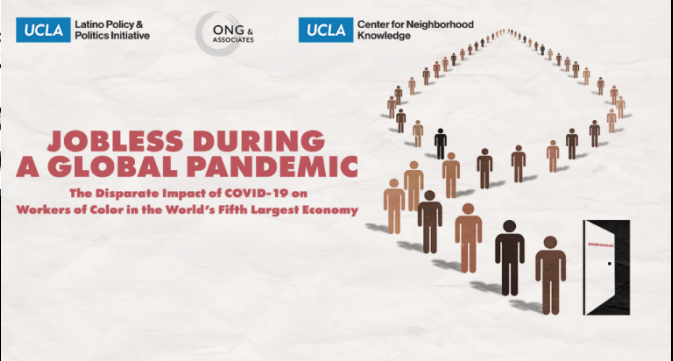
UCLA Latino Policy & Politics Initiative

ONG & ASSOCIATES

UCLA Center for Neighborhood Knowledge

## JOBLESS DURING A GLOBAL PANDEMIC

### The Disparate Impact of COVID-19 on Workers of Color in the World's Fifth Largest Economy



knowledge.luskin.ucla.edu/news

Thank you.  
Questions?

[knowledge.luskin.ucla.edu/](http://knowledge.luskin.ucla.edu/)